



News from your Local Councillor

Cr Mark Edwards

The CAGE's heart beats for Redlands

Since arriving in the Redlands in 2001, The CAGE Youth Foundation continues to make a difference to the lives of young people, our future leaders, and their families

CAGE stands for Creating A Good Environment, and that's certainly what it has been doing through its local skate parks, dance parties, Epic Days Out, school health and wellbeing sessions, workshops and after-school programs.

It is one of the Redlands' leading youth and community engagement services, coordinating a range of major events, workshops, life skills, personal development, counselling, intervention and crisis care. Having established itself on German Church Road, Redland Bay, it is



now looking to expand and would appreciate any support as it moves to buy the land there to ensure its future and that of Redlands' kids.

As a self-funded charity, all donations over \$2 are tax deductible. If you would like to partner with The Cage and make a donation, you will be helping it to help others in the City. For more information, go to www.thecage.info



FUN TIMES: Young Redlanders obviously get a lot out of The CAGE.

Your feedback sought on plan for Men's Shed

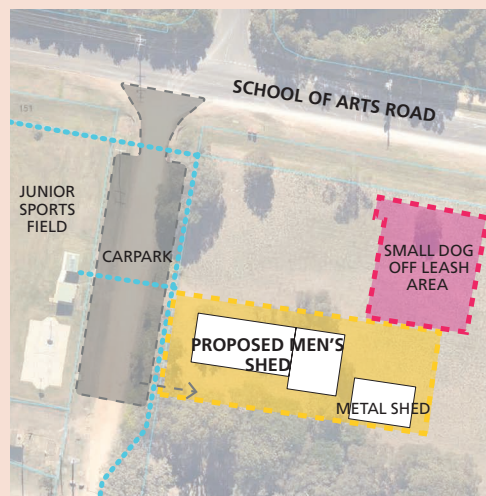
For some time Council has been seeking to make an area available to the local Redland Bay Men's Shed group for a facility to support the men of southern Redlands.

Men's Sheds are known to provide respite from isolation or depression, as well as being a source of new skills. They provide an invaluable service to the community through joint projects and community service.

An area of land off Donald Road (opposite the half basketball court), has recently been identified as an area that may suit this purpose. This area, pictured, will form part of a dedicated public recreation and open space area. The Men's Shed would be quite close to the proposed site of the new dog off-leash area.

The closed dirt section of Donald Road, off School of Arts Road, can be turned into a car park to service the Men's Shed as well as the park.

Your views are very important to us. As part of the process of assessing if this is a suitable site, we are seeking to inform you of this plan for your neighbourhood and asking for your thoughts and feedback. If supported by the community and approved both by the State Government and Council, the Men's Shed group would be offered a lease.



City Plan update

Redland City Council reached a significant milestone in the State Government-prescribed planning process when it submitted the draft of its new City Plan for State Interest Review in November last year.

Subsequently, Council has made a number of minor amendments and resubmitted them for the Minister's approval. Once approval is received, Council will take the proposed City Plan to public consultation, giving the community a chance to both review the scheme and provide formal feedback through a submission process.

This process will be widely advertised and include community forums, mailouts, interactive online engagement tools, displays, website and social media information and meet-the-planner sessions.



TOP TEAM: Myself with the Redland Bay State School P&C executive team - vice-president of operations Katherine James, secretary Sarah Gillies, president Paul Booker, treasurer Toka Hohepa and vice-president of community relations Stephanie Eaton.

P&C getting great results for Bay families

The Redland Bay State School is an example of excellence in education with a committed and caring teaching and support staff, led by an inspiring principal.

I had the privilege to attend the recent Redland Bay State School P&C annual meeting, with a record attendance of parents, carers, teachers and community representatives. The executive committee members from 2014 were returned unanimously and they have already developed great plans for this year, including school projects, community involvement and fundraising Initiatives.

The focus of the P&C is primarily to serve as a voice for parents, carers and the wider community to ensure that Redland Bay State School continues to achieve great results academically, on the sporting field, in the arts and within the community. It also operates the school tuckshop and uniform shop, with profits invested back into the school, and raises much-needed funds.

The P&C already has committed \$8000 towards air-conditioning the school library this year and also is looking to develop further community involvement and partnerships.

If you are a business looking for a sponsorship opportunity, a community organisation looking to build partnerships or a community member who can spare a couple of hours to volunteer within the school, they would love to hear from you and work with you to make Redland Bay State School an even better place for our children.

You can contact them via email at pandc@redlandbayss.eq.edu.au or like them on Facebook at www.facebook.com/RBSSPandC.

The P&C meets every third Tuesday of the month at 7.15pm in the school's performance arts centre.

ANZAC dawn service at Redland Bay

This year marks the centenary of Gallipoli and the Redland Bay South RSL will again perform the dawn service from 4.45am, with the veterans forming up at the corner of Weinam and Banana streets. The service will start at 5am.

I encourage everyone to attend as we remember Australians who served and died in all wars, conflicts and peacekeeping operations.

This years' service will re-enact the landing at Gallipoli and, as there will be loud noise, ear plugs will be issued as you pass through one of the three entry gates.

Due to the extended length of the service, please bring a chair. This will enable everyone to see, as the floor of the cenotaph will be raised to assist in easier viewing.

People without chairs will be encouraged to stand at the rear.

I am pleased that Council has assisted in a small way in making funds available via the Councillor Grants program.

A "gunfire breakfast" will be served in the community hall from 4.40am for a gold coin and, after the service, you are invited to indulge in the breakfast that was served to the diggers: bully beef and biscuits with tea.

Anyone who wants to lay a wreath on behalf of a family member or a group can arrange it by calling 3206 9524 or 3829 1432.

On behalf of the community, I would like to thank the Redland Bay South RSL for its hard work and dedication in organising and facilitating the ANZAC Day services.



REDLAND BAY SOUTH RSL

Mozzie watch

Council is conducting surveys and ground and aerial treatments in the continuing fight against mozzies.

Find out how you can help at www.redland.qld.gov.au.

Keep in touch

Why not join the hundreds of residents who have already contacted me for help with an issue?

You can email me anytime at mark.edwards@redland.qld.gov.au or telephone 0407 695 667.

Warm regards,

Cr Mark Edwards
Division 5 - Mainland